

Ho'ohanau*

Spring 2016

Volume 1, Issue 5



FIH 5 YEAR ANNIVERSARY PARTY

* Ho'ohanau
Means to
reproduce &
fertile

Hale Pawa'a
1401 S. Beretania St.
Ste 250
Honolulu, Hawaii
96814

INSIDE THIS ISSUE:

Infertility Seminar	2
FIH Holiday Party	2
Resolve Support Groups	2
New Faces Around Our Office	3
Embryo Donation	3
Baby Of The Month	3
Tis The Season To Give	4
IVF Research Study	4



The Fertility Institute of Hawaii is having our 5 year Anniversary Celebration this coming spring, which is open to all patients and their immediate families. This fun filled family event will be held at **The Aulani Disney resort on Sunday, May 22nd**.

This event is meant to celebrate you,

CONGRATULATIONS ON THE DISTINGUISHED HONORS

American Board of Bio-analysis has distinguished Dr. Frattarelli as a High-Complexity Clinical Laboratory Director. This is a very rigorous distinction that is awarded to less than 5 % of all REIs in the US. Furthermore, Dr.

Frattarelli is the only REI in the state of Hawaii to have this level of certification. We are very proud to be at the forefront of technological advancement and to hold ourselves to such high standards.

our patients, and for us to show our appreciation. The day will be filled with a complimentary gourmet buffet, games and prizes for the whole family, face-painting, a magician, as well as guest appearances by Mickey, Minnie, and Goofy, and much more. If you are interested in attending, please email us at

FIH5year@gmail.com to RSVP by May 1st. We regret that only those who RSVP before the big day will be admitted.



INFERTILITY TEACHING SEMINARS



The Fertility Institute of Hawaii will be hosting an inaugural Infertility teaching seminar Saturday, February 27th from 12 – 2 PM, upstairs on the 4th floor in conference-room 440. These sessions are open to everyone, and we encourage you to invite friends and family who may have questions regarding their fertility or who have been trying to conceive for more than 6 months.

This teaching session is meant to

answer the most frequently asked questions regarding causes of infertility, treatments available for infertility, as well as the costs associated with infertility treatment. Fertility preservation and egg freezing will also be covered. We will have these types of teachings monthly throughout the year and will keep you updated.

To learn more, please email us at: josiah@armghawaii.com or call us at 808-545-2800

FIH HOLIDAY PARTY

Every year in December, our employees and their significant others get together to relieve a little stress and to have a little fun. All year, our employees work tirelessly to be able to provide the best possible service to our patients. Thanks to the Drs. Frattarelli, we enjoyed an amazing night at the beautiful Halekulani Hotel. We were spoiled with an amazing atmosphere and ser-

vice; not to mention the great food and wine! The party was brought to life with an amusing photo-booth, our loveable MC's, and the always entertaining white-elephant gift exchange. Did I mention we had an ice-cream bar? For us the fun is over but we will always have the memories and photos to remember, now It's back to what we do best; helping our patients.



RESOLVE PEER SUPPORT GROUPS

Resolve is pleased to announce a new peer support group in Honolulu, HI. Meetings will be held on the first Thursday of every month from 6:30pm to 8:00pm in the conference rooms next to the dining area/cafeteria at Kapiolani Medical Center for Women & Children. The upcoming dates include:

March 3 Conference Rm CR-A

April 7 Conference Room CR-C

May 5 Conference Room CR-A

June 2 Conference Room CR-A

For more information, please email your questions or comments to Vanessa, the group leader, at:

Resolvehawaii@outlook.com.



NEW FACES AROUND THE OFFICE

This past year we have added a few new faces to our office to accommodate the growing patient demand and to better serve our current patients. Our most recent addition is Nurse Practitioner Anna. Anna is originally from Belarus, but moved to the U.S when she was 20 years old. She has a very impressive educational background, completing her undergraduate studies at Cornell University with a Microbiology degree and most recently completing the Nurse Practitioner program at UH Manoa. Not only is she qualified on paper, but she has worked as an embryologist/andrologist for 4 years, as well as an infertility coordinator

for another 2 years. She has worked at multiple fertility clinics throughout her career, making her extremely familiar and capable with helping fertility patients to achieve their goals of having a family.

Outside of work, Anna enjoys going to the beach, reading, and spending time with her Chihuahua Nikki.

We are very fortunate to have such a talented and caring individual join our team, we feel our patients will truly love her as well. Aloha and E Komo Mai Anna.



BABY OF THE MONTH

We are still currently looking for individuals to participate in our Baby of the Month Photography Storytelling Project, in partnership with Rita Coury Photography, Inc. If you are a patient of ours, in your sixth or seventh month of pregnancy and are interested in this unique photo opportunity,

please let us know. By sharing your inspirational stories, you provide hope and determination to a great many that are on the journey to building a family. To find out more about this beautiful project contact Robyn at 808-380-8237 or by email robyn@armghawaii.com

EMBRYO DONATION PROGRAM

Be a part of our embryo donation program. Our in house embryo adoption program is the only one of its kind in Hawaii. By donating your embryos, infertile couples that are unable to have children utilizing their own sperm and/or eggs can realize the dream of starting a

family. If you have any questions regarding embryo donation, please call us at 808-545-2800 or email us at FIH@armghawaii.com and we can discuss the process with you.





TIS THE SEASON TO GIVE

Every year, the staff at FIH choose a local charitable organization to contribute to. This year we donated to the Hawaii Children's Cancer Foundation and were able to provide a 5 foot tall box filled with school supplies, toys, and various comfort items for kids and their families.

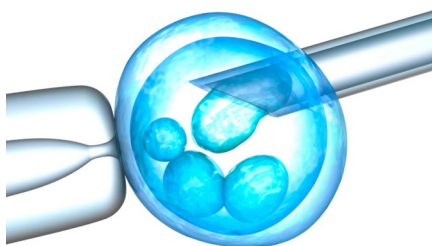
We want to give a big Mahalo to our friends at Hawaii Children's Cancer Foundation for the incredible work that they do for kids in Hawaii. Thank you for distributing Kokua baskets to newly diagnosed children with cancer, when in the hospital.



Serving to assist, support and advocate for the needs of children diagnosed with cancer, their families, and long-term survivors of childhood cancer.



IVF RESEARCH STUDY



Follow us on Facebook, Instagram, and Twitter for daily/ weekly practice updates and tips...



The *Fertility Institute of Hawaii* has been participating in a research study where if patients meet the qualifications, they can receive IVF treatment at a greatly reduced total cost of \$3,000. To be eligible, patients must be between the ages of 21-35 years old, trying to conceive for over a year, have a BMI of 19-30, AMH level greater than 5, and regular menses every 21-45 days (not on birth control).

The purpose of this study is to compare the efficacy between different medications currently used in the

treatment for infertility. This study is a great opportunity for patients who do not have IVF coverage through their insurance or who have exhausted their IVF benefit. Compliance with all protocols and the ability to follow detailed instructions are requirements for involvement in this study.

If you have any questions, know someone who may want to participate, or would like to inquire about participation, please contact your IVF-coordinator or

joycelyn@armghawaii.com

Comments or suggestions for our newsletter? Let Us Know at www.ivfcenterhawaii.com/contact_us.html